

# Childhood Obstructive Sleep Apnea Associates with Neuropsychological Deficits and Neuronal Brain Injury

Ann C. Halbower<sup>1\*</sup>, Mahaveer Degaonkar<sup>2</sup>, Peter B. Barker<sup>2</sup>, Christopher J. Earley<sup>3</sup>, Carole L. Marcus<sup>4</sup>, Philip L. Smith<sup>5</sup>, M. Cristine Prahme<sup>6</sup>, E. Mark Mahone<sup>6,7</sup>

**1** Department of Pediatrics, Johns Hopkins University School of Medicine, Baltimore, Maryland, United States of America, **2** Department of Radiology, Johns Hopkins University School of Medicine, and FM Kirby Center for Functional Brain Imaging, Kennedy Krieger Institute, Baltimore, Maryland, United States of America, **3** Department of Neurology, Johns Hopkins University School of Medicine, Baltimore, Maryland, United States of America, **4** Department of Pediatrics, University of Pennsylvania, Philadelphia, Pennsylvania, United States of America, **5** Department of Medicine, Johns Hopkins University School of Medicine, Baltimore, Maryland, United States of America, **6** Department of Neuropsychology, Kennedy Krieger Institute, Baltimore, Maryland, United States of America, **7** Department of Psychiatry, Johns Hopkins University School of Medicine, Baltimore, Maryland, United States of America

**Funding:** See section at end of manuscript.

**Competing Interests:** The authors have declared that no competing interests exist.

**Academic Editor:** James Walsh, Sleep Medicine Research Center, United States of America

**Citation:** Halbower AC, Degaonkar M, Barker PB, Earley CJ, Marcus CL, et al. (2006) Childhood obstructive sleep apnea associates with neuropsychological deficits and neuronal brain injury. *PLoS Med* 3(8): e301. DOI: 10.1371/journal.pmed.0030301

**Received:** January 11, 2006

**Accepted:** May 11, 2006

**Published:** August 22, 2006

**DOI:**

10.1371/journal.pmed.0030301

**Copyright:** © 2006 Halbower et al. This is an open-access article distributed under the terms of the Creative Commons Attribution License, which permits unrestricted use, distribution, and reproduction in any medium, provided the original author and source are credited.

**Abbreviations:** ADHD, attention deficit hyperactivity disorder; AHI, apnea hypopnea index; AI, arousal index; BMI, body mass index; Cho, choline; Cr, creatine; D-KEFS, Delis-Kaplan Executive Function System; EEG, electroencephalogram; MRSI, magnetic resonance spectroscopy imaging; NAA, N-acetyl aspartate; OSA, obstructive sleep apnea; SaO<sub>2</sub>N, oxygen saturation nadir; SaO<sub>2</sub>T, oxygen saturation time; SD, standard deviation; SDB, sleep-disordered breathing; SES, socioeconomic status;  $\eta^2$ , eta squared

\* To whom correspondence should be addressed. E-mail: ahalbowe@jhmi.edu

## ABSTRACT

### Background

Childhood obstructive sleep apnea (OSA) is associated with neuropsychological deficits of memory, learning, and executive function. There is no evidence of neuronal brain injury in children with OSA. We hypothesized that childhood OSA is associated with neuropsychological performance dysfunction, and with neuronal metabolite alterations in the brain, indicative of neuronal injury in areas corresponding to neuropsychological function.

### Methods and Findings

We conducted a cross-sectional study of 31 children (19 with OSA and 12 healthy controls, aged 6–16 y) group-matched by age, ethnicity, gender, and socioeconomic status. Participants underwent polysomnography and neuropsychological assessments. Proton magnetic resonance spectroscopic imaging was performed on a subset of children with OSA and on matched controls. Neuropsychological test scores and mean neuronal metabolite ratios of target brain areas were compared.

Relative to controls, children with severe OSA had significant deficits in IQ and executive functions (verbal working memory and verbal fluency). Children with OSA demonstrated decreases of the mean neuronal metabolite ratio N-acetyl aspartate/choline in the left hippocampus (controls: 1.29, standard deviation [SD] 0.21; OSA: 0.91, SD 0.05;  $p = 0.001$ ) and right frontal cortex (controls: 2.2, SD 0.4; OSA: 1.6, SD 0.4;  $p = 0.03$ ).

### Conclusions

Childhood OSA is associated with deficits of IQ and executive function and also with possible neuronal injury in the hippocampus and frontal cortex. We speculate that untreated childhood OSA could permanently alter a developing child's cognitive potential.

*The Editors' Summary of this article follows the references.*

## Introduction

Individuals require a wide range of cognitive skills in order to function in society, so if the acquisition of these skills is perturbed during development, there may be a long-term effect on cognitive and psychological function. Obstructive sleep apnea (OSA)—defined as obstructed breathing efforts during sleep [1] with resultant gas exchange abnormalities and sleep fragmentation [2]—has been linked to increased cardiovascular mortality, increased automobile accidents, and cognitive function impairments in adults. Untreated childhood OSA enormously increases health resource utilization [3], and has been associated with growth problems, cardiovascular consequences, and neuropsychological dysfunctions such as learning and memory problems [4,5], decreased attention, and poor school performance [6]. From a cognitive standpoint, adult OSA has been linked to deficits of executive function (flexible adaptation to novel situations with an organized, goal-directed approach) [7]. In children, gains of executive function skills occur during developmental periods corresponding to the neuronal myelination and maturation of the prefrontal cortex [8,9]. Executive function is considered critical for school-age children to develop complex problem solving [10] and perform other volitional tasks in response to new situations with demands on working memory [11]. If untreated OSA causes neuropsychological or executive dysfunction in developing children, and if these skills are permanently impaired before maturation of the prefrontal cortex, it could severely alter a child's cognitive potential, ultimately impacting both the child's health and his or her functioning level in society.

Symptomatic childhood sleep-disordered breathing (SDB), which includes simple snoring and labored breathing, and partial obstructions that might not meet the adult criteria for OSA [12,13], has long been associated with behavioral dysfunctions including aggression, impulsivity, hyperactivity, and decreased attention based on subjective data provided by parents or teachers [14–21]. These behaviors mimic those associated with attention deficit hyperactivity disorder (ADHD), a disorder that presents with alterations in executive function [22]. Objective measurements of specific neuropsychological performance deficits related to sleep problems in children have been limited; however, recent studies have begun to identify significant differences in cognitive function between children with SDB and healthy controls. For example, Gottlieb and colleagues found significantly lower performance on measures of memory, executive function, and general intelligence in 5-y-old children with symptoms of SDB than in asymptomatic children [23]. O'Brien et al. demonstrated decreased general intelligence, language, and visual-spatial skills in 87 habitually snoring children [24]. O'Brien's group demonstrated even more significant neuropsychological deficits in children with more severe apnea [25].

The mechanisms causing these neuropsychological deficits have not been fully delineated. While sleepiness and sleep fragmentation might be readily reversible with treatment, neuronal injury resulting from long-term oxygen saturation abnormalities might represent a more pervasive health risk. There is evidence of altered brain function associated with blood gas abnormalities. Patients with sleep apnea have reduced cerebral blood flow and altered cerebrovascular responses to hypercapnia [26,27]. Hypoxia causes neuronal

injury in vulnerable parts of the brain, especially the cerebellum and hippocampus, where the formation of lactate and free radicals is thought to lead to cellular injury [28,29]. The hippocampus is critically involved in learning and memory. Sleep deprivation in rats alters the synaptic plasticity of the hippocampus [30], and impairs hippocampus-mediated contextual learning [31] and spatial learning [32]. Intermittent hypoxia also causes spatial learning deficits and increased motor activity in juvenile rats [33]. The mechanism proposed for the spatial learning deficits observed in rats involved apoptosis of subpopulations of hippocampal neurons [34]. The authors suggested that the behaviors demonstrated by rats exposed to intermittent hypoxia were similar to those demonstrated by children with sleep apnea.

Imaging studies of adults with sleep apnea have identified abnormal morphology of the frontal cortex, cerebellum, and hippocampus [35,36]. Functioning in a complex integrated network, these brain areas are important for executive function, motor regulation of breathing [35,37], and memory function, respectively. Altered central nervous system metabolites of neuronal white and gray matter in OSA patients have been demonstrated using proton magnetic resonance spectroscopy imaging (MRSI). The authors suggested that hypoxemia resulting from sleep apnea might have caused cerebral neuronal injury. There is recent evidence that suggests a link between hippocampal metabolite alterations and deficits of cognitive function in adults with OSA [38].

These studies provide evidence that SDB is associated with observable reductions in cognitive function in both adults and children. In adults with sleep apnea, there are measurable morphological abnormalities in the brain, but adults with OSA often suffer from comorbid health problems such as diabetes [39], hypertension, and cardiovascular disease [40], which could confound the association. There have been no studies demonstrating such neuronal injury in children with sleep apnea. These studies are crucial, since childhood OSA impacts a rapidly developing brain, and thus the long-term consequences of neuronal injury may be far greater than those seen in adults.

The purpose of this study was to examine the neuropsychological deficits associated with moderate to severe childhood sleep apnea, and to determine whether these deficits are associated with neuronal changes in vulnerable target areas of the brain. We hypothesized that SDB would be associated with neuropsychological dysfunction in the areas of executive function, learning, and memory; and that central nervous system metabolite alterations would be observed in brain regions associated with these functions, i.e., the hippocampus and frontal cortex.

## Methods

### Design

This study was approved by the Western Institutional Review Board in collaboration with the Johns Hopkins University Internal Review Board. All researchers adhered to the Johns Hopkins University policies on patient privacy and research ethics in compliance with the Declaration of Helsinki. All parents or guardians signed informed consent forms for their children to participate in the research project,

and children over the age of 8 y signed informed assent forms.

This was a cross-sectional study of participants aged 6–16 y with moderate to severe OSA compared to non-snoring healthy children group-matched by age, ethnicity, gender, and socioeconomic status (SES). OSA patients were identified by polysomnographic sleep studies performed at the Johns Hopkins sleep lab. All tests were performed while the OSA patients were awaiting surgical management. OSA participants met enrollment criteria if they had moderate to severe OSA by our definition, i.e., an apnea hypopnea index (AHI)  $\geq$  8 (see “Polysomnography” for definition of apnea). All participants underwent polysomnography and a battery of neuropsychological tests. Proton MRSI of the brain was performed on a subset of OSA participants and control children (those who met inclusion criteria and could tolerate imaging time without sedation).

**Recruitment.** Normal healthy non-snoring participants had no known medical problems, and were recruited from inner-city Baltimore by advertisements placed in the Johns Hopkins Hospital (downtown campus), in public sites in the inner city, and in a local African-American newspaper (since  $>70\%$  of our clinic patients are African-American). For matching of SES, children were recruited from Baltimore City, with confirmation of zip code, maternal education level, and Hollingshead index. Hollingshead index is an index of SES based on parent education and type of job. Guardians of normal children were questioned by phone to determine eligibility for inclusion, with extensive questions about past medical history, medication use, and demographic information. At the time of the neuropsychological testing, questionnaires were used to verify history, medications, and demographic information.

The age range for this study was selected based on several criteria. The selected neuropsychological tests have been standardized and validated in this age range. Furthermore, there is a track record of success of brain imaging in children of this age range at our center, without the need for behavior training or sedation. Additionally, normal neuronal metabolite concentrations in the brain have been established for children in this age range [41–43]. Imaging studies in childhood OSA have not been performed previously, therefore we chose children with severe sleep apnea to more likely identify possible neuronal injury associated with OSA.

**Exclusionary criteria.** Exclusionary criteria included a full scale IQ score  $\leq$  75 on initial testing, neurological abnormalities revealed by history or radiological or electroencephalogram (EEG) studies, use of psychotropic or sedative medications for the last 2 wk before study, or non-English speakers because of the difficulty of performing neuropsychological tests through an interpreter. Children were also excluded if there was a history of significant medical, psychiatric, vision, or hearing impairment, or mental retardation. Children with life-threatening sleep apnea requiring emergency management were also excluded. Children with other sleep problems such as insomnia, parasomnias, bedtime behavior difficulties, restless legs syndrome, or abnormal movement during sleep were excluded. Children with sleep apnea who had a previous diagnosis or symptoms of ADHD or a history of chronic hyperactivity ( $n = 5$ ) were not excluded because of the common overlap of these disorders with OSA; however, data

analyses were performed both with and without these children for comparison. Furthermore, the children with OSA and ADHD were assessed only while off psychotropic medication for more than 2 wk. All participants were screened to ensure that they had no contraindications for MRI, namely claustrophobia, cardiac pacemaker, orthodontics (braces), or other non-magnetic-resonance-compatible surgical/ferromagnetic implant. If contraindications were noted, children were allowed to proceed with neuropsychological testing but MRI was not performed. Normal control children were not excluded for ADHD if they otherwise met criteria (healthy, non-snoring, no other exclusion criteria or psychotropic medications). Control children with subsequent findings of AHI  $>1$ , or prolonged hypercapnia ( $>50$  mm Hg for  $>20\%$  of total sleep time) measured by polysomnography were excluded, and there was no crossover to the OSA group.

### Polysomnography

Polysomnography was performed on all participants. During the sleep study, surface electrodes and monitoring devices measured signals from central EEG, right and left electro-oculogram, surface EMG, ECG, chest and abdominal wall motion, and end-tidal PCO<sub>2</sub> (Novamatrix, Wallingford, Connecticut, United States). Pulse oximetry with an 8-s averaging time was used to record the time in minutes of any oxygen saturation less than 95% to detect brief oxygen saturation changes (Masimo, Irvine, California, United States). Airflow was measured by oro-nasal thermistor in all children. Additionally, nasal pressure was monitored in order to obtain a more quantitative flow signal (Protech, Mukilteo, Washington, United States). Polysomnogram data were displayed digitally (Alice 4, Atlanta, Georgia, United States). All studies were monitored with real-time video for motion analysis and snoring recording.

Respiratory parameters of interest included arousals, apneas, and hypopneas, low oxygen saturation time (SaO<sub>2</sub>T), hypercapnia time, and oxygen saturation nadir (SaO<sub>2</sub>N). The arousal index (AI) was the number of arousals and awakenings measured by a shift of EEG signal to the alpha or beta range for greater than 3 s (as previously defined by the American Sleep Disorders Association [44]) divided by the total sleep time in hours. An apnea was defined as an absence of airflow for two or more breath cycles. Hypopnea was a visible decrease in airflow by nasal pressure signal (or by thermistor when pressure signal was unavailable) and either an EEG arousal or a drop in oxygen saturation of 3% or greater. A mixed apnea was an obstructive apnea in combination with a central (absent effort) apnea. The AHI comprised the obstructive, mixed, and hypopnea events divided by total sleep time in hours; central apneas were not included in the AHI. SaO<sub>2</sub>T was the time (in minutes) with oxygen saturations less than 95% (in order to detect mild intermittent desaturations), and SaO<sub>2</sub>N was the severity of oxygen desaturation. Hypercapnia time was the time in minutes that the end-tidal CO<sub>2</sub> monitor detected a CO<sub>2</sub> level greater than 50 mm Hg. There is no established definition of mild, moderate, or severe sleep apnea in children. OSA in adults is defined by the AHI: the number of apnea or hypopnea (partial obstruction) events per hour. However, continuous partial obstruction is underestimated by these criteria, and is considered significant by the Johns Hopkins Sleep Program. The AHI in normal non-snoring children has been deter-

mined to be less than 1.0 with little hypercapnia (time with  $\text{CO}_2 > 50$  mm Hg) [45–47]. For this protocol, mild OSA was defined as AHI 1–5, moderate OSA as AHI 5–10, and severe OSA as AHI greater than 10.

### Neuropsychological Evaluation

The neuropsychological assessment was administered by a psychometrician (M. C. P.) supervised by a licensed psychologist (E. M. M.), both of whom were masked to the group assignment of the participants at the time of testing. The protocol was selected to include areas considered to be vulnerable in children with OSA—executive function and memory—as abnormalities of these brain systems may negatively impact psychosocial function and have been shown to be affected in adults with sleep apnea [48]. In addition, domains hypothesized to be less affected in children with OSA (visual–spatial perception and motor speed) were also included for comparison. Global intelligence was measured using the full scale IQ scores from *WISC-III* [49] ( $n = 15$ ) or *WISC-IV* [50] ( $n = 16$ ). In addition to IQ, the assessment protocol included measures of executive function (i.e., response preparation, inhibition, and working memory), attention, verbal and visual memory, neuromotor function, cerebellar function (i.e., perceptual and motor timing), and visual–spatial perception.

### Magnetic Resonance Spectroscopy

Magnetic resonance spectroscopy detects steady state levels of native metabolites present in the brain. Among the brain compounds easily measured with magnetic resonance spectroscopy are N-acetyl aspartate (NAA), choline (Cho), and creatine (Cr, often used as a background comparison).

Children were introduced to the MRI machine at the FM Kirby Center for Functional Brain Imaging by use of a full-size mock scanner where the protocol and noise could be demonstrated ahead of time. The children were asked to lie still and they were supported with foam pillows to reduce movement. They were able to listen to music or watch movies with specially designed headphones and mirrors inside the actual scanner. No sedation was used in any study.

Two different approaches were used for proton MRSI of the brain: multi-slice MRSI for coverage of supratentorial brain regions, and single voxel methods for the hippocampus and cerebellum. All magnetic resonance examinations were performed on a 1.5 Tesla clinical system (Philips Intera NT, Phillips Medical Systems, Best, Netherlands). Routine T1 and T2 weighted MRI sequences were used to screen and exclude for any structural abnormalities. Three oblique axial slices (thickness, 15 mm; intersectional gap, 2.5 mm) parallel to the anterior commissure–posterior commissure line were selected for the proton MRSI. Outer volume saturation pulses were used for suppression of lipid and water signals originating from the skull and scalp, and a chemical-shift-selective saturation pulse was used for water suppression. The three interleaved slices were recorded with a repetition time ( $T_R$ ) of 1,700 ms and an echo time ( $T_E$ ) of 280 ms (field of view,  $24 \times 18$  cm; matrix size,  $32 \times 24$ ; signal average, 1), giving a total of 15 min for data acquisition with circular  $k$ -space sampling. The nominal voxel size was  $0.8 \text{ cm}^3$ . Spectra were evaluated from the following brain regions: putamen, thalamus (predominantly pulvinar region), dorsal parietal cortex, parietal white matter, frontal white matter, medial

premotor cortex, and frontal cortex. In order to minimize partial volume effects, only voxels that appeared completely encompassed by the boundaries of the anatomic regions of interest were included. Single voxel methods utilized a PRESS sequence with a short echo time ( $T_R/T_E$  1,500/35 ms) placed in the body of the left hippocampus and the mesial left cerebellum. Voxel size was  $2 \times 1.5 \times 1.5$  cm. For both spectroscopic methods, metabolites were expressed as ratios in comparison to levels of other metabolites, specifically, the NAA/Cr, Cho/Cr, and NAA/Cho ratios. This measurement method effectively detects metabolite changes that move in opposite directions such as the decreased NAA to increased Cho seen in ischemic brain injury [51] and in the injury reported in adult OSA [52]. Figure 1 shows an example of single voxel imaging of the hippocampus in a normal male child, with blue outer volume suppression bands used to improve the accuracy of the hippocampal signal by suppressing surrounding lipid signal.

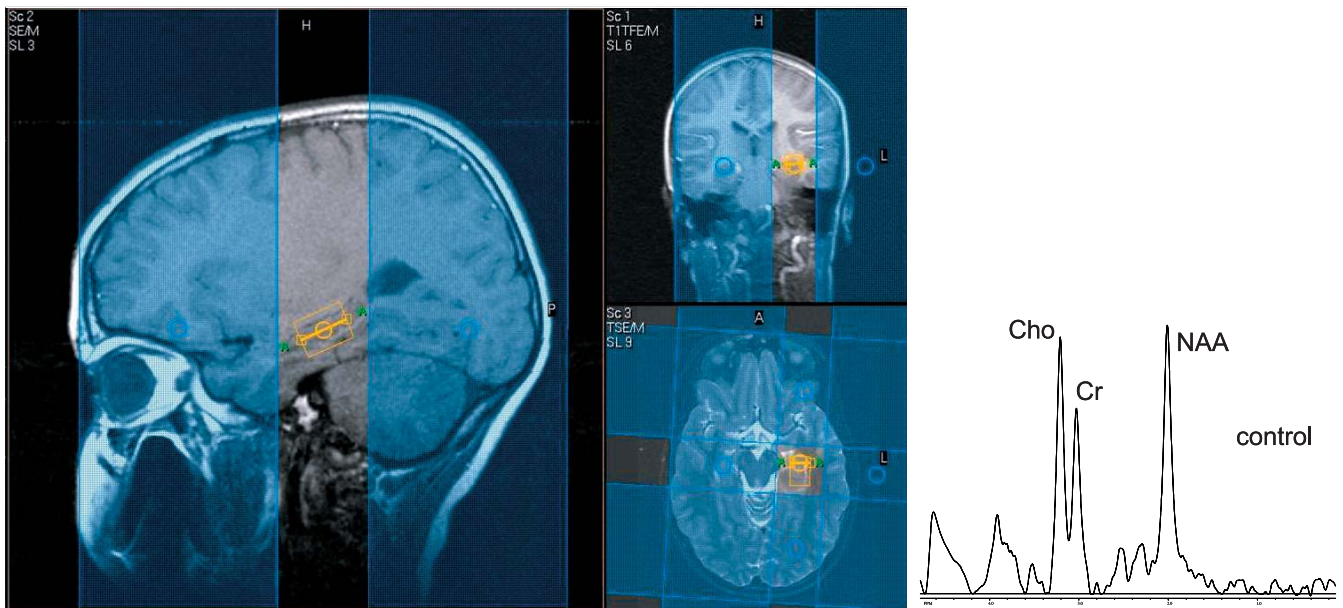
### Statistical Analysis

**Neuropsychological testing.** For neuropsychological testing, the primary predictor variable was group status (control versus OSA measured by the AHI). Secondary predictor variables were other polysomnographic parameters (AI,  $\text{SaO}_2\text{T}$ ,  $\text{SaO}_2\text{N}$ , and  $\text{CO}_2 > 50$ ) and body mass index (BMI). Primary outcomes were mean standard neuropsychological test scores. Levene's test was used to ensure homogeneity of variance between groups. The Mann–Whitney  $U$  statistic for nonparametric analysis was used for all variables in which the Levene's test was significant. Analysis of variance was used to determine differences in the outcomes assessed as a function of group status.  $T$ -tests were performed assuming equal variance, and the two-tailed significance is reported. Group differences were also compared by effect size, measured by eta squared ( $\eta^2$ ), a measure of contrast between groups independent of sample size [53]. According to Cohen [54], values of 0.01, 0.06, and 0.14 are used to indicate small, medium, and large associations between variables, respectively.

**Brain Magnetic Resonance Spectroscopy.** For brain imaging studies, sleep apnea patients were compared to group matched normal children where the outcome variable was mean cerebral metabolite ratios determined by measurement of mean cerebral metabolite ratios of target areas of the brain on MRSI.  $T$ -tests were performed assuming equal variance, and the two-tailed significance is reported.

**Sample size and statistical power.** Previous reports of cognitive dysfunction in severe childhood OSA demonstrated significant effects when comparing healthy controls to as few as five OSA patients and nine snoring patients without OSA [55]. Power analysis was conducted to determine the appropriate sample size needed in each group in order to detect group differences between the sleep apnea patients and normal participants on mean neuropsychological test scores. Using the criteria of a power of 0.80, a type I error rate of 0.05, a mean test–retest reliability of selected instruments of 0.80, and estimates of moderate to large effect size (i.e.,  $\eta^2 > 0.07$ ), based on our preliminary data, it was determined that a sample size of 13 participants in each group would be adequate to detect group differences in neuropsychological test score results between sleep apnea patients and normal participants. Considering the multiple comparisons, only





**Figure 1.** Single Voxel Image from the Left Hippocampus in an 11-year-old Normal Male Child

Blue areas are outer volume suppression bands that improve the accuracy of the hippocampal signal by suppressing surrounding lipid signal. On the right is a spectroscopy signal from a 11 year old male child, the spectrum demonstrating peaks from NAA, Cho, and Cr.

DOI: 10.1371/journal.pmed.0030301.g001

neuropsychological test results with a significance level  $p < 0.05$  and  $\eta^2 > 0.1$  were considered significant and interpreted further in our analyses to control for both type I and type II error. MRSI has not been previously performed in children with OSA; however, adults with OSA demonstrated differences in hippocampal metabolites with eight patients versus five controls [38]. Since this study represents the first MRSI in children with OSA, we performed brain imaging on all eligible children who could tolerate the procedure. Correction for multiple comparisons was not made, in order to gather data for future study.

## Results

### Demographics

Thirty-four children were initially enrolled after screening for exclusionary criteria, but two did not return for testing,

and one control was excluded after a finding of snoring and prolonged end-tidal  $\text{CO}_2$  levels greater than 50 mm Hg (358 min) despite a normal AHI and oxygen saturation. Demographic information for the entire eligible sample ( $n = 31$ ) is listed in Table 1. There were no significant group differences in SES, measured by median household income, or maternal education between groups. Additionally, the Hollingshead index, an index of SES based on parental education and job type, was not different between the groups. There were no significant differences between the two groups in age, gender ratio, handedness, or racial distribution (see Table 1). Of the 19 OSA patients, five had a history of hyperactivity or diagnosis of ADHD, and analyses are presented separately for OSA and OSA excluding ADHD (“OSA/not ADHD”) groups. No normal children with ADHD answered the recruitment advertisements, therefore the control group does not include

**Table 1.** Demographic Parameters for Entire Sample ( $n = 31$ )

Variable	Control ( $n = 12$ )		OSA ( $n = 19$ )		$\chi^2$	p-Value <sup>a</sup>	OSA/Not ADHD ( $n = 14$ ) <sup>b</sup>		$\chi^2$	p-Value <sup>c</sup>
	Mean	SD	Mean	SD			Mean	SD		
Age in years	9.8	2.6	10.0	2.5	0.86		10.1	2.7		0.77
Maternal education in years	12.9	3.2	12.5	1.5	0.61		12.4	1.6		0.57
Hollingshead index <sup>d</sup>	40.0	18.1	33.2	8.7	0.18		33.1	8.6		0.23
Median household income ( $\times 10^3$ )	34.6	12.1	33.9	11.5	0.85		32.9	7.5		0.67
Gender (% male)	67		58		0.24	0.46	57.1		0.25	0.62
Ethnicity (% African-American)	67		79		1.78	0.41	85.7		3.47	0.18
Handedness (% right-handed)	75		89		1.10	0.28	85.7		0.48	0.49

<sup>a</sup>p-Value for two-tailed t-tests (df = 29) comparing OSA patients to controls.

<sup>b</sup>OSA/not ADHD is OSA group excluding children with ADHD.

<sup>c</sup>p-Value for two-tailed t-tests (df = 24) for OSA patients excluding children with ADHD compared to controls.

<sup>d</sup>Hollingshead index is an index of SES that is based on parent education and type of job.

SD, standard deviation.

DOI: 10.1371/journal.pmed.0030301.t001

**Table 2.** Respiratory Parameters for Entire Sample ( $n = 31$ )

Variable	Function/Description	Control ( $n = 12$ )		OSA ( $n = 19$ )		$p$ -Value <sup>a</sup>	$\eta^2$	OSA/Not ADHD ( $n = 14$ ) <sup>b</sup>		$p$ -Value <sup>c</sup>	$\eta^2$
		Mean	SD	Mean	SD			Mean	SD		
BMI	Body mass index	19.7	4.6	27.9	8.4	0.004	0.25	29.3	8.1	0.001	0.36
AHI	Apnea hypopnea index	0.2	0.3	34.6	31.5	0.001	0.33	40.6	34.1	0.000	0.41
AI	Arousal index	5.0	2.2	15.7	16.7	0.037	0.14	17.3	18.9	0.035	0.17
SaO <sub>2</sub> T	Time with oxygen saturation < 95%	0.7	1.0	67.7	84.3	0.010	0.21	86.7	91.1	0.003	0.31
SaO <sub>2</sub> N	Oxygen saturation nadir	93.4	2.7	74.3	17.3	0.001	0.32	69.9	18.2	0.000	0.44
CO <sub>2</sub> > 50	Time that CO <sub>2</sub> > 50 mm Hg	3.7	6.2	82.6	109.6	0.019	0.17	78.0	105.0	0.002	0.20

<sup>a</sup> $p$ -Value for two-tailed  $t$ -tests ( $df = 29$ ) comparing OSA patients to controls;  $\eta^2$  is the effect size.

<sup>b</sup>OSA/not ADHD is OSA group excluding children with ADHD.

<sup>c</sup> $p$ -Value for two-tailed  $t$ -tests ( $df = 24$ ) for OSA patients excluding children with ADHD compared to controls;  $\eta^2$  is the effect size (moderately large effect size > 0.1).

SD, standard deviation.

DOI: 10.1371/journal.pmed.0030301.t002

any individuals with ADHD. After excluding the children with ADHD ( $n = 5$ ) from the OSA group, there were still no differences between groups in age, SES, gender ratio, handedness, or racial distribution. The individuals in the OSA groups had significantly higher BMIs than did controls.

### Polysomnography Results

Respiratory parameters for OSA and control groups are listed in Table 2. The mean and median AHI in the OSA group fell into the severe range by our criteria, although there was a large standard deviation in time with oxygen saturation less than 95% (SaO<sub>2</sub>T; 0–271 min), SaO<sub>2</sub>N (48%–96%), and time with CO<sub>2</sub> levels greater than 50 mm Hg (0–371 min).

### Neuropsychological Function

Results of neuropsychological test performance for all groups are listed in Table 3. Children with OSA had significantly lower scores than matched controls on full scale IQ. The OSA group also had significantly lower performance on measures of executive function, including verbal working memory (sentence span) and word fluency (measured by the Delis-Kaplan Executive Function System (D-KEFS) category fluency test). In contrast, the executive functions reported to be impaired in adult sleep apnea [5,56,57] (i.e., problem solving and planning, inhibitory control, sustained attention, and vigilance) were not affected in children with severe sleep apnea. There were no significant differences between groups on any of the other neuropsychological variables; however,

**Table 3.** Neuropsychological Assessment Data for Entire Sample

Variable	Function/Description	Score Type <sup>a</sup>	Control ( $n = 12$ )		OSA ( $n = 19$ )		$p$ -Value <sup>b</sup>	$\eta^2$	OSA/Not ADHD ( $n = 14$ ) <sup>c</sup>		$p$ -Value <sup>d</sup>	$\eta^2$
			Mean	SD	Mean	SD			Mean	SD		
FSIQ <sup>e</sup>	Full scale IQ	SS	101.1	14.7	85.8	10.7	0.002	0.279	85.6	10.7	0.005	0.285
Letter fluency <sup>f</sup>	EF—response preparation	ScS	10.5	2.5	9.7	2.9	0.485	0.019	10.3	2.8	0.895	0.001
Category fluency <sup>f</sup>	EF—response preparation	ScS	12.0	2.3	9.7	2.5	0.018	0.198	9.9	2.5	0.048	0.166
PANESS total	Motor speed and efficiency	Raw	22.3	8.8	26.4	11.0	0.275	0.041	26.7	11.6	0.285	0.048
Perceptual timing <sup>g</sup>	Cerebellar function	Raw	49.0	20.9	63.4	22.8	0.213	0.095	72.9	19.0	0.046	0.293
Motor timing <sup>g</sup>	Cerebellar function	Raw	37.2	13.8	41.9	7.4	0.403	0.054	41.7	8.3	0.480	0.046
CPT omissions	Attention	$T$ -score	60.2	18.0	62.7	19.4	0.721	0.005	63.1	21.8	0.717	0.006
CPT commissions	EF—response inhibition	$T$ -score	49.8	10.7	50.5	8.6	0.842	0.001	50.2	9.1	0.920	0.000
CMS faces <sup>h</sup>	Memory—visual	ScS	8.7	1.9	9.0	2.4	0.744	0.005	9.0	1.5	0.718	0.011
CMS dot locations <sup>h</sup>	Memory—visual	ScS	11.0	2.8	8.6	4.1	0.210	0.096	8.1	4.0	0.157	0.160
CVLT-C total	Memory—verbal	$T$ -score	53.6	6.6	48.0	10.1	0.101	0.090	49.7	10.3	0.274	0.050
CVLT-C trial 5	Memory—verbal	$Z$ -score	0.3	0.6	−0.3	1.0	0.081	0.101	−0.3	0.9	0.128	0.094
CVLT-C SDFR	Memory—verbal	$Z$ -score	0.0	0.8	−0.3	1.0	0.360	0.029	−0.3	1.0	0.486	0.020
Sentence span	EF—working memory	Raw	15.5	9.1	8.3	6.5	0.015	0.186	8.8	7.3	0.048	0.154
JLO	Visuospatial perception	$Z$ -score	−1.2	2.2	−2.1	1.5	0.157	0.068	−2.4	1.6	0.101	0.108

<sup>a</sup>SS indicates standard score (mean, 100; standard deviation, 15); ScS indicates scaled score (mean, 10; standard deviation, 3).

<sup>b</sup> $p$ -Value for two-tailed  $t$ -tests ( $df = 29$ ) comparing OSA patients ( $n = 19$ ) to controls ( $n = 12$ );  $\eta^2$  is the effect size (moderately large effect size > 0.1).

<sup>c</sup>OSA/not ADHD is OSA group excluding children with ADHD.

<sup>d</sup> $p$ -Value for two-tailed  $t$ -tests ( $df = 24$ ) comparing OSA patients excluding children with ADHD ( $n = 14$ ) to controls ( $n = 12$ );  $\eta^2$  is the effect size (moderately large effect size > 0.1).

<sup>e</sup>IQ scores from *WISC-IV* [50] ( $n = 16$ ) or *WISC-III* [49] ( $n = 15$ ) (equal numbers of OSA and control children were tested with each *WISC* edition).

<sup>f</sup>Letter and category fluency scores from D-KEFS.

<sup>g</sup> $n = 18$ .

<sup>h</sup> $n = 19$ .

CMS, Children's Memory Scale; CPT, Conners' Continuous Performance Test—II; CVLT-C, California Verbal Learning Test for Children; EF, executive function; JLO, Judgment of Line Orientation Test; PANESS total, Physical and Neurological Assessment of Subtle Signs—total score; SD, standard deviation; SDFR, short delay free recall.

DOI: 10.1371/journal.pmed.0030301.t003

**Table 4.** Left Hippocampal Neuronal Metabolites in OSA Compared to Control Children

Variable	Function/Description	Score Type	Control (n = 6)		OSA (n = 6)		p-Value <sup>a</sup>	$\eta^2$	OSA/Not ADHD (n = 5) <sup>b</sup>		p-Value <sup>c</sup>	$\eta^2$
			Mean	SD	Mean	SD			Mean	SD		
			Age	In years	Raw	11.0			2.3	11.5		
Maternal education	SES	Raw	13.0	1.9	12.5	0.5	0.55	0.037	12.4	0.5	0.15	0.049
Hollingshead index	SES	Raw	34.1	12.7	37.9	8.0	0.55	0.038	37.8	8.9	0.60	0.032
BMI	Body mass index	Raw	20.9	4.9	30.0	6.2	0.02	0.440	29.2	6.6	0.04	0.388
FSIQ	Full scale IQ	SS <sup>d</sup>	97.8	10.5	87.2	14.3	0.17	0.178	88.6	15.5	0.27	0.133
Category fluency <sup>e</sup>	EF—response preparation	ScS <sup>f</sup>	11.2	2.0	10.3	2.6	0.55	0.037	11.0	2.2	0.90	0.002
Sentence span	EF—working memory	Raw	17.2	9.9	9.5	5.3	0.13	0.219	9.8	5.8	0.18	0.191
AHI	Apnea hypopnea index	Raw	0.4	0.3	37.9	8.0	0.001	0.706	37.8	8.9	0.002	0.683
AI	Arousal index	Raw	4.9	2.0	13.2	7.2	0.02	0.424	11.0	5.5	0.03	0.424
SaO <sub>2</sub> T	Time with oxygen saturation < 95%	Raw	0.4	0.5	20.4	14.7	0.007	0.527	18.6	15.6	0.02	0.480
SaO <sub>2</sub> N	Oxygen saturation nadir	Raw	92.4	3.3	84.8	6.6	0.04	0.377	84.8	7.3	0.07	0.359
NAA/Cr	Single voxel left hippocampus	Ratio	1.21	0.23	1.22	0.38	0.88	0.003	1.24	0.42	0.89	0.002
NAA/Cho	Single voxel left hippocampus	Ratio	1.29	0.21	0.91	0.05	0.001	0.655	0.90	0.05	0.003	0.653
Cho/Cr	Single voxel left hippocampus	Ratio	0.94	0.05	1.37	0.41	0.03	0.396	1.39	0.45	0.04	0.393

<sup>a</sup>p-Value for two-tailed t-tests (df = 11) comparing OSA patients (n = 7) to controls (n = 6);  $\eta^2$  is the effect size.

<sup>b</sup>OSA/not ADHD is OSA group excluding children with ADHD.

<sup>c</sup>p-Value for two-tailed t-tests (df = 10) comparing OSA group excluding children with ADHD (n = 6) to controls (n = 6);  $\eta^2$  is the effect size (moderately large effect size > 0.1).

<sup>d</sup>SS indicates standard score (mean, 100; standard deviation, 15).

<sup>e</sup>Category fluency score from D-KEFS.

<sup>f</sup>ScS indicates scaled score (mean, 10; standard deviation, 3).

EF, executive function; SD, standard deviation.

DOI: 10.1371/journal.pmed.0030301.t004

both visual-spatial memory (Children's Memory Scale Dot Locations,  $\eta^2 = 0.10$ ) and verbal memory (California Verbal Learning Test for Children,  $\eta^2 = 0.09$ ) demonstrated large effect sizes, suggesting that, with a larger sample, statistically significant differences between groups on these measures might be detected. Motor speed, perceptual timing, and motor timing (dependent on cerebellar functioning) were also not affected in our full sample of sleep apnea patients; however, when the children with ADHD were excluded from the OSA group, there was a significant deficit noted on the perceptual timing task ( $\eta^2 = 0.29$ ,  $p < 0.05$ ). The group differences in full scale IQ, verbal working memory, and word fluency remained significant after the children with ADHD were excluded. BMI was noted to correlate with decreased IQ ( $r = -0.45$ ,  $p = 0.019$ ); however, when BMI was controlled for the AHI (after confirming BMI overlap between the groups), this effect was no longer significant ( $r = -0.32$ ,  $p = 0.106$ ).

### Proton MRSI

Proton MRSI studies of the brain were performed in a subset of children with OSA and controls. Children with ADHD were analyzed and reported separately (see Tables 4 and 5; the OSA group excluding ADHD are labeled as "OSA/not ADHD" in the tables). Of the 31 eligible children successfully completing a polysomnogram, 26 underwent some or all of the brain imaging studies. Dropouts or exclusions from brain imaging included the following: one with metal dental work and four who could not tolerate the MRI (three obese children complained of claustrophobia). Regions of interest in the brain scan corresponded to areas hypothesized to be linked to neuropsychological deficits, including white and gray matter of the frontal and parietal lobes, assessed by MRSI, and the middle left hippocampus and cerebellum, assessed by the single voxel method. The total scan time was 1 h. The children were not sedated; therefore,

some regions of interest were unable to be analyzed because of motion artifact ( $n$  varies depending on the image reported).

Single voxel spectroscopy measurements of the body of the left hippocampus were analyzed in 12 children (six patients with OSA and six controls; see Figure 1), and results are reported in Table 4. Within this subsample, there were no significant differences between groups in age, maternal education, gender distribution ( $\chi^2 = 4.4$ ,  $p = 0.08$ ), handedness ( $\chi^2 = 0.1$ ,  $p = 0.65$ ), or race ( $\chi^2 = 0.02$ ,  $p = 0.73$ ). The group differences in neuropsychological test scores in this subsample continued to show a large effect size. Compared to controls, the OSA group had a significant decrease in hippocampal NAA/Cho ( $p = 0.001$ ) and a significant increase of Cho/Cr ( $p = 0.03$ ), indicating abnormal neuronal metabolism in the static state.

These differences remained when the subsample was analyzed excluding the child with ADHD from the OSA group. There was little overlap of results between the two groups in this subsample aged 9–16 y (see Figure 2).

Only two children under age 9 underwent single voxel MRSI of the hippocampus (one 7-y-old in each group; the control was male and the OSA patient was female). The OSA patient had an AHI of 33.8, but her NAA/Cr ratio demonstrated an unusual value (2.16), more than twice that of all the other OSA patients, and significantly higher than that of all the normal children (range of NAA/Cr levels for all OSA and control participants: 0.89–1.98). When results were compared including these younger children, the increased Cho/Cr in the OSA group remained significant ( $p = 0.05$ ), while NAA/Cho was no longer significantly decreased because of the unusual value of NAA/Cr in the OSA patient driven by the increased NAA spectral peak (see Discussion).

MRSI of cortical structures was performed in 13 children

**Table 5.** MRSI of Right Frontal Cortex: OSA Patients Compared to Controls

Variable	Function/Description	Score Type	Control (n = 6)		OSA (n = 7)		p-Value <sup>a</sup>	$\eta^2$	OSA/Not ADHD (n = 6) <sup>b</sup>		p-Value <sup>c</sup>	$\eta^2$
			Mean	SD	Mean	SD			Mean	SD		
			Age	In years	Raw	11.0			2.3	11.0		
Maternal education	SES	Raw	11.7	2.2	12.4	0.5	0.38	0.070	12.3	0.5	0.48	0.051
Hollingshead index	SES	Raw	31.3	12.0	36.4	8.4	0.41	0.070	36.0	9.1	0.48	0.057
BMI	Body mass index	Raw	21.0	4.8	29.4	5.8	0.02	0.418	28.7	6.0	0.04	0.374
FSIQ	Full scale IQ	SS <sup>d</sup>	98.2	10.1	87.4	13.1	0.13	0.195	88.7	13.9	0.21	0.155
Category fluency <sup>e</sup>	EF—response preparation	ScS <sup>f</sup>	11.7	1.4	10.6	2.4	0.35	0.079	11.2	2.0	0.63	0.024
Sentence span	EF—working memory	Raw	18.7	7.7	11.0	6.2	0.07	0.262	11.5	6.7	0.12	0.227
AHI	Apnea hypopnea index	Raw	0.2	0.3	19.0	9.9	0.001	0.661	17.6	10.0	0.002	0.645
AI	Arousal index	Raw	5.2	1.8	13.2	6.6	0.02	0.427	11.4	4.9	0.02	0.452
SaO <sub>2</sub> T	Time with oxygen saturation < 95%	Raw	0.4	0.5	17.6	15.3	0.02	0.402	15.6	15.8	0.04	0.356
SaO <sub>2</sub> N	Oxygen saturation nadir	Raw	92.4	3.3	86.0	6.7	0.08	0.275	86.2	7.4	0.12	0.252
NAA/Cr	MRSI right frontal cortex	Ratio	2.7	0.6	3.1	1.7	0.64	0.021	3.1	1.8	0.61	0.028
NAA/Cho	MRSI right frontal cortex	Ratio	2.2	0.4	1.6	0.4	0.03	0.371	1.5	0.3	0.008	0.526
Cho/Cr	MRSI right frontal cortex	Ratio	1.3	0.3	1.9	1.1	0.20	0.147	2.1	1.2	0.15	0.198

<sup>a</sup>p-Value for two-tailed t-tests (df = 11) comparing OSA patients (n = 7) to controls (n = 6);  $\eta^2$  is the effect size.

<sup>b</sup>OSA/not ADHD is OSA group excluding children with ADHD.

<sup>c</sup>p-Value for two-tailed t-tests (df = 10) comparing OSA group excluding children with ADHD (n = 6) to controls (n = 6);  $\eta^2$  is the effect size (moderately large effect size > 0.1).

<sup>d</sup>SS indicates standard score (mean, 100; standard deviation, 15).

<sup>e</sup>Category fluency score from D-KEFS.

<sup>f</sup>ScS indicates scaled score (mean, 10; standard deviation, 3).

EF, executive function; SD, standard deviation.

DOI: 10.1371/journal.pmed.0030301.t005

(seven OSA patients and six controls), and results are presented in Table 5. Within this subsample, there were no significant differences between groups in age, maternal education, gender distribution ( $\chi^2 = 1.6$ ,  $p = 0.23$ ), handedness ( $\chi^2 = 0.1$ ,  $p = 0.57$ ), or race ( $\chi^2 = 1.4$ ,  $p = 0.51$ ). There continued to be a large effect size difference in neuropsychological test scores between groups. Metabolite ratios were compared between groups in frontal and parietal white and gray matter, as well as thalamus, putamen, and premotor cortex. There was a significant difference between groups in the NAA/Cho ratio in right frontal cortex ( $p = 0.03$ ). This difference was even more significant when we excluded children with ADHD from the OSA sample ( $p = 0.008$ ). There were no significant group differences (regardless of ADHD status) in the other brain areas measured using MRSI.

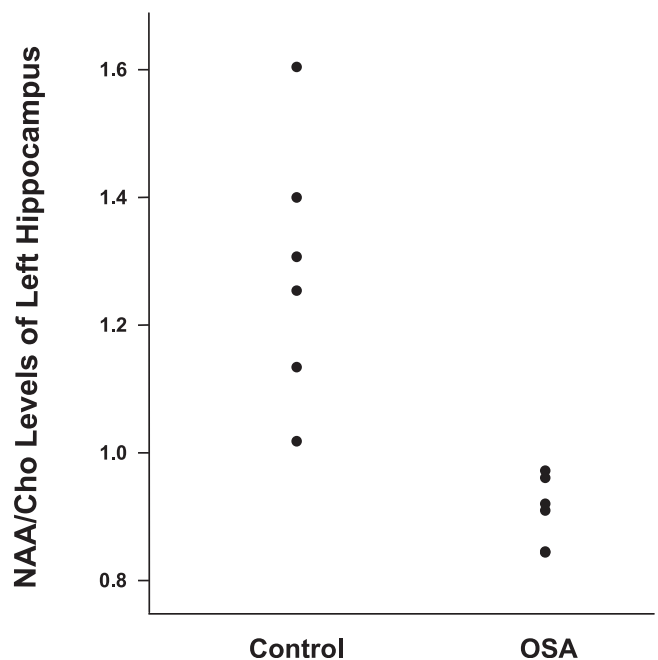
Single voxel MRSI studies of the cerebellum in 12 children (five controls and seven OSA patients) showed no differences between groups on cerebellar metabolite ratios: Cho/Cr ( $p = 0.53$ ,  $\eta^2 = 0.04$ ), NAA/Cr ( $p = 0.61$ ,  $\eta^2 = 0.03$ ), or NAA/Cho ( $p = 0.24$ ,  $\eta^2 = 0.14$ ), although given the large effect size for NAA/Cho, the difference might be significant with a larger sample.

## Discussion

To our knowledge, this is the first study utilizing MRSI to measure central nervous system metabolites in children with OSA, and to identify central nervous system changes associated with neuropsychological dysfunction in childhood OSA. This study demonstrated two primary findings: (A) neuronal metabolites in pediatric OSA patients were altered in the hippocampus and the right frontal cortex, indicating possible neuronal injury linked to severe childhood OSA, and (B) children with severe OSA had significantly lower IQ and executive control functions compared to normal children matched for age, gender, ethnicity, and SES. These cognitive

functions depend on neuronal networks corresponding to the structures where we identified metabolite alterations.

In the current study, children with sleep apnea and neuropsychological dysfunction demonstrated decreased levels of NAA/Cho in both the hippocampus and the right frontal cortex. The brain areas affected are important in IQ



**Figure 2.** Hippocampal Neuronal NAA/Cho Metabolites Are Decreased in Children with OSA aged 9–16 y

The ratio of NAA to Cho is decreased in the hippocampus of OSA patients compared to normal children.

DOI: 10.1371/journal.pmed.0030301.g002



and executive function and corroborate the findings from morphological studies of adult OSA showing decreased gray matter in the same regions [35,36]. While these findings do not necessarily indicate a causal relationship between OSA and neuronal abnormality (i.e., it is not known whether sleep apnea causes brain damage or pre-existing brain damage causes sleep apnea), it will be important to determine to what extent these findings reverse with treatment. The NAA signal localizes predominantly to neurons, axons, and dendrites within the central nervous system. Decreased NAA signal is notably seen in diseases with neuro-axonal loss or dysfunction [58,59], while increases in Cho occur in pathological conditions during active demyelination, as well as with changes of membrane metabolism or glial cell reaction [60,61]. Normal changes in Cho are also seen during myelin maturation in early development [41], but tend to be stable after age 2 y [43]. Previous animal studies of irreversible cerebral ischemia demonstrated decreased NAA signals by proton MRSI within minutes of injury, and these metabolite signals were detected prior to changes noted by typical magnetic resonance imaging [51]. NAA/Cho alterations are not necessarily permanent, as noted in studies of childhood encephalopathy or acute multiple sclerosis where reduced NAA/Cho improved after resolution of illness [62,63]. Therefore, dysfunction or acute injury to the axon can lead to decreased NAA prior to axonal loss. It is not clear, however, whether long-standing metabolite alterations are reversible, or whether there is a vulnerable age of neuronal plasticity that leads to permanent brain injury with neuronal metabolite alterations [64,65].

The laterality of our findings to the right frontal cortex is interesting, particularly given the neuropsychological findings involving verbal working memory and fluency, thought to lateralize to the left frontal cortex. Executive functions are supported by a distributed neural network with cortical and subcortical components including the frontal cortex and its striatal-thalamic-cerebellar connections [7,11,57,66]. Volumetric studies of adults with OSA demonstrate diffuse gray matter loss bilaterally in the frontal lobes, but those participants may have had long-standing OSA [35]; therefore, our finding in children may reflect changes earlier in the course of disease.

The neuronal metabolite levels of NAA/Cho in the hippocampus were significantly reduced in children with OSA aged 9–16 y compared to controls, as demonstrated in Figure 2, where there is virtually no overlap between the two groups. We identified a younger child (a 7-y-old female with OSA) with unusually high NAA/Cr and NAA/Cho levels driven by a high NAA spectral peak. There are regional variations of NAA and Cho concentrations in the brain, and NAA/Cho levels are known to increase with age, especially between birth and age 2 y, but increases are subtle after age 2, up to a peak at age 10 y [43]; therefore, the elevated NAA/Cho in the 7-y-old OSA patient would not be an expected age-related change [41,43,67,68]. An increase in NAA is associated with increasing axon density, increased dendrites, and increased synaptic connections [41]. In rats exposed to intermittent hypoxia, apoptosis of hippocampal neurons correlating with spatial memory dysfunction was later reversed by neurogenesis, which is a unique capability of the hippocampus [33]. Additionally, gender-specific protection from brain injury in females [69] has been seen in experiments using intermittent

hypoxia, which caused decreased branching dendrites in male but not female rats during development. The increased NAA spectral peak noted in the 7-y-old female with OSA might be an outlier, or might represent neuronal recovery and neurogenesis in the damaged hippocampal neurons as seen in the animal studies. This finding requires validation with young participants in order to determine whether certain age groups or genders are more susceptible to neuronal injury or recovery.

The findings of decreased IQ and altered executive function demonstrated by our study suggest that OSA can impact a child's ability to learn and adapt to new challenges, or to perform in school. The participants in our study had severe sleep apnea. Although the prevalence of severe childhood sleep apnea is not known, 17% of otherwise healthy children aged 6–16 y referred to our clinic from the local primary care providers for symptoms of SDB fall into this category. The neuropsychological deficits in this study of children with severe sleep apnea were more profound than those found in previous studies of mild OSA. However, these results corroborate the findings of several pediatric studies of cognition in childhood SDB, where deficits in general intelligence [23,25,55,70–73] and some measures of executive function [23,25,74] were noted. Compared to previous findings in adults with OSA, some executive functions (i.e., problem solving, planning, inhibitory control, and sustained attention) were not affected in children with severe sleep apnea [5,75]. Motor speed was also not affected in our sleep apnea patients.

Unlike most other pediatric studies of neuropsychological deficits linked to mild or moderate SDB, we enrolled children with severe sleep apnea from a lower socioeconomic area with lower maternal education. The IQ levels were more profoundly impacted in our children with OSA compared to previous pediatric studies, with the exception of the Montgomery-Downs study of at-risk children [70], the O'Brien study of significant sleep apnea in children with a minority population of 60% (mean AHI 9.8) [25], and the Rhodes study of teenagers where the participants were morbidly obese [55]. These studies demonstrated that multiple risk factors may be additive in terms of neuropsychological consequences. In contrast to our study, the neuropsychological differences between apnea and control populations in the vast majority of pediatric studies may be underestimated because of enrollment of affluent populations with either high maternal education or high average IQ levels (conferring a possible protective effect on measurable neuropsychological deficits) [15,21,23,71,74,76], or because of design limitations such as the inclusion of children with snoring or mild OSA (AHI 1–5) in the control group [23,55,76] or the lack of confirmation of normal breathing in control groups defined with a polysomnogram [15,21,73,74,77].

The OSA participants in our study were significantly more overweight or obese than the control participants. This study limitation reflects the reality of our referral population, in which more than 40% of our general pediatric clinic patients are reported to be at risk for obesity. We were unable to recruit enough non-snoring obese controls to match for obesity, and snoring controls were excluded because of previous studies demonstrating that snoring is not normal [24]. Most studies focusing on the neuropsychological impacts

of childhood sleep apnea do not include information on the BMI of the children enrolled. Obesity is a risk factor for SDB and is a common finding in children referred to sleep centers [78]. Both SDB and obesity can affect quality of life [79,80]. If obesity and SDB interact, these combined problems as well as lifestyle factors linked with obesity (such as television time) may play an important role in exacerbating neuropsychological impairments associated with sleep apnea.

We admitted into our study five children with OSA who had symptoms or a diagnosis of ADHD given the common overlap of sleep disturbances and daytime symptoms in children with ADHD and with OSA [81]. It is difficult to distinguish ADHD as a premorbid versus comorbid feature associated with sleep apnea. Likewise, many children seen in the clinic have symptoms of hyperactivity or ADHD but have not undergone formal diagnostic testing, therefore underestimating the prevalence of a comorbid disorder. It has been previously shown that executive functions are impaired in children with ADHD [82], especially notably in children with average or less than average IQ levels [83]. When children with ADHD were excluded from the OSA population, the significance of our findings did not change, indicating that they were not influencing our results.

In clinical studies of OSA, it is difficult to differentiate the effects of sleep fragmentation from hypoxemia on neuropsychological function, since by definition the AHI encompasses both sleep fragmentation and oxygen saturation abnormalities. This study was not designed to separate these factors. Although the magnitude of the association of respiratory parameters to cognitive deficits was stronger than that of the AI, the AI might play a significant role in cognitive deficits with a larger sample. Several pediatric studies of snoring children without gas exchange abnormalities (often termed “primary snoring”) demonstrate effects on attention [24,71,72,74], IQ [23,24,71,72], or memory [23,72], indicating a possible role for sleep fragmentation or sleep disruption in neuropsychological dysfunction. The participants in our study were older, with more severe apnea, than the participants in studies of primary snoring, suggesting that age or severity of OSA may contribute to the relative neuropsychological impacts of sleep fragmentation versus oxygen deprivation injury. There may be a spectrum of SDB, from sleep fragmentation, to mild disease, to more severe disease. However, chronic sleep disruption during active brain development could potentially lead to permanent decreased cognitive potential, thus causing as serious a situation as oxygen deprivation to the brain.

We were limited to the number of participants available in this study because of the expense of brain imaging. We acknowledge that some comparisons may have shown statistically significant group differences with larger samples, and effect sizes are reported to assist in the interpretation of effects for future research. For example, cerebellar neuronal abnormalities associated with childhood OSA and related neuropsychological dysfunction (e.g., perceptual timing) may indeed be observed in larger samples.

Childhood OSA has a prevalence of about 2% in the general population [84,85], and severe sleep apnea cases represent 17% of the otherwise normal school-aged children referred to our sleep center. OSA in adults has been linked to increased cardiovascular morbidity and mortality, increased automobile accidents, and cognitive function impairments.

We found that childhood OSA is associated with deficits of IQ and executive function and also with abnormal neuronal metabolites in the hippocampus and frontal cortex, indicating possible neuronal injury. We speculate that untreated childhood OSA could permanently alter the trajectory of a developing child’s ultimate cognitive potential, resulting in a lifetime of health and economic impacts. It remains to be determined if early identification and treatment can reverse the neuronal and performance deficits identified in this study of childhood OSA. Future studies will need to address the effect of treatment, and explore gender- and age-related differences in vulnerability to help target early diagnosis and treatment most effectively.

## Supporting Information

**Alternative Language Abstract S1.** Translation of Abstract into Portuguese by Author

Found at DOI: 10.1371/journal.pmed.0030301.sd001 (25 KB DOC).

**Alternative Language Abstract S2.** Translation of Abstract into French by Author

Found at DOI: 10.1371/journal.pmed.0030301.sd002 (22 KB DOC).

**Alternative Language Abstract S3.** Translation of Abstract into Spanish by Author

Found at DOI: 10.1371/journal.pmed.0030301.sd003 (22 KB DOC).

**Alternative Language Abstract S4.** Translation of Abstract into Tagalog by Author

Found at DOI: 10.1371/journal.pmed.0030301.sd004 (22 KB DOC).

## Acknowledgments

**Author contributions.** ACH was responsible for concept development for the entire project. ACH, CJE, CLM, and EMM were responsible for project design. ACH and MCP were responsible for data acquisition. ACH, PLS, and EMM were responsible for data analysis and interpretation. MD and PBB were responsible for analysis and interpretation of radiological data. ACH was responsible for drafting the manuscript. ACH, MD, PBB, CJE, CLM, PLS, MCP, and EMM were responsible for manuscript revision and final approval of the manuscript.

**Funding:** This study was funded by the Thomas Wilson Sanitarium for the Children of Baltimore City, the Johns Hopkins University School of Medicine General Clinical Research Center, and grant M01-RR00052 from the National Center for Research Resources of the National Institutes of Health (NIH). Radiologists were funded by NIH grant P41 RR15241, CLM by NIH grant HL58585, and PLS by National Heart, Lung, and Blood Institute grant HL 37379-19. The funding agencies had no role in study design, data collection and analysis, decision to publish, or preparation of the manuscript.

## References

- Gastaut H, Duron B, Tassinari CA, Lyagoubi S, Saier J (1969) Mechanism of the respiratory pauses accompanying slumber in the Pickwickian syndrome. *Act Nerv Super (Praga)* 11: 2095.
- Guilleminault C, Rosekind M (1981) The arousal threshold: Sleep deprivation, sleep fragmentation, and obstructive sleep apnea syndrome. *Bull Eur Physiopathol Respir* 17: 341–349.
- Reuveni H, Simon T, Tal A, Elhayany A, Tarasiuk A (2002) Health care services utilization in children with obstructive sleep apnea syndrome. *Pediatrics* 110: 68–72.
- Salorio CF, White DA, Piccirillo J, Duntley SP, Uhles ML (2002) Learning, memory, and executive control in individuals with obstructive sleep apnea syndrome. *J Clin Exp Neuropsychol* 24: 93–100.
- Bedard MA, Montplaisir J, Richer F, Rouleau I, Malo J (1991) Obstructive sleep apnea syndrome: Pathogenesis of neuropsychological deficits. *J Clin Exp Neuropsychol* 13: 950–964.
- Gozal D (1998) Sleep-disordered breathing and school performance in children. *Pediatrics* 102: 616–620.
- Beebe DW, Groesz L, Wells C, Nichols A, McGee K (2003) The neuropsychological effects of obstructive sleep apnea: A meta-analysis of norm-referenced and case-controlled data. *Sleep* 26: 298–307.
- Levin HS, Culhane KA, Hartmann J, Evankovich K, Mattson AJ, et al. (1991)

- Developmental changes in performance on tests of purported frontal lobe functioning. *Dev Neuropsychol* 7: 377–395.
9. Welch MC, Pennington BF, Groisser DB (1991) A normative-developmental study of executive function: A window on prefrontal function in children. *Dev Neuropsychol* 7: 131–149.
  10. Denckla MB (1996) Research on executive function in a neurodevelopmental context: Application of clinical measures. *Dev Neuropsychol* 12: 5–15.
  11. Jones K, Harrison Y (2001) Frontal lobe function, sleep loss and fragmented sleep. *Sleep Med Rev* 5: 463–475.
  12. Bao G, Guilleminault C (2004) Upper airway resistance syndrome—One decade later. *Curr Opin Pulm Med* 10: 461–467.
  13. Gottlieb DJ, Vezina RM, Chase C, Lesko SM, Heeren TC, et al. (2003) Symptoms of sleep-disordered breathing in 5-year-old children are associated with sleepiness and problem behaviors. *Pediatrics* 112: 870–877.
  14. Archbold KH, Pituch KJ, Panahi P, Chervin RD (2002) Symptoms of sleep disturbances among children at two general pediatric clinics. *J Pediatr* 140: 97–102.
  15. Ali NJ, Pitson D, Stradling JR (1996) Sleep disordered breathing: Effects of adenotonsillectomy on behaviour and psychological functioning. *Eur J Pediatr* 155: 56–62.
  16. Goldstein NA, Fatima M, Campbell TF, Rosenfeld RM (2002) Child behavior and quality of life before and after tonsillectomy and adenoidectomy. *Arch Otolaryngol Head Neck Surg* 128: 770–775.
  17. Owens J, Opiari L, Nobile C, Spirito A (1998) Sleep and daytime behavior in children with obstructive sleep apnea and behavioral sleep disorders. *Pediatrics* 102: 1178–1184.
  18. Stradling JR, Thomas G, Warley AR, Williams P, Freeland A (1990) Effect of adenotonsillectomy on nocturnal hypoxaemia, sleep disturbance, and symptoms in snoring children. *Lancet* 335: 249–253.
  19. Guilleminault C, Winkle R, Korobkin R, Simmons B (1982) Children and nocturnal snoring: Evaluation of the effects of sleep related respiratory resistive load and daytime functioning. *Eur J Pediatr* 139: 165–171.
  20. Brouillette RT, Fernbach SK, Hunt CE (1982) Obstructive sleep-apnea in infants and children. *J Pediatr* 100: 31–40.
  21. Lewin DS, Rosen RC, England SJ, Dahl RE (2002) Preliminary evidence of behavioral and cognitive sequelae of obstructive sleep apnea in children. *Sleep Med* 3: 5–13.
  22. Klimkeit EI, Mattingley JB, Sheppard DM, Lee P, Bradshaw JL (2005) Motor preparation, motor execution, attention, and executive functions in attention deficit/hyperactivity disorder (ADHD). *Neuropsychol Dev Cogn C Child Neuropsychol* 11: 153–173.
  23. Gottlieb DJ, Chase C, Vezina RM, Heeren TC, Corwin MJ, et al. (2004) Sleep-disordered breathing symptoms are associated with poorer cognitive function in 5-year-old children. *J Pediatr* 145: 458–464.
  24. O'Brien LM, Mervis CB, Holbrook CR, Bruner JL, Klaus CJ, et al. (2004) Neurobehavioral implications of habitual snoring in children. *Pediatrics* 114: 44–49.
  25. O'Brien LM, Mervis CB, Holbrook CR, Bruner JL, Smith NH, et al. (2004) Neurobehavioral correlates of sleep-disordered breathing in children. *J Sleep Res* 13: 165–172.
  26. Balfors EM, Franklin KA (1994) Impairment of cerebral perfusion during obstructive sleep apneas. *Am J Respir Crit Care Med* 150: 1587–1591.
  27. Netzer N, Werner P, Jochums I, Lehmann M, Strohl KP (1998) Blood flow of the middle cerebral artery with sleep-disordered breathing: Correlation with obstructive hypopnea. *Stroke* 29: 87–93.
  28. Cervos-Navarro J, Diemer NH (1991) Selective vulnerability in brain hypoxia. *Crit Rev Neurobiol* 6: 149–182.
  29. Cooper CE (1999) In vivo measurements of mitochondrial function and cell death following hypoxic/ischaemic damage to the new-born brain. *Biochem Soc Symp* 66: 123–140.
  30. McDermott CM, LaHoste GJ, Chen C, Musto A, Bazan NG, et al. (2003) Sleep deprivation causes behavioral, synaptic, and membrane excitability alterations in hippocampal neurons. *J Neurosci* 23: 9687–9695.
  31. Ruskin DN, Liu C, Dunn KE, Bazan NG, LaHoste GJ (2004) Sleep deprivation impairs hippocampus-mediated contextual learning but not amygdala-mediated cue learning in rats. *Eur J Neurosci* 19: 3121–3124.
  32. Smith C, Rose GM (1996) Evidence for a paradoxical sleep window for place learning in the Morris water maze. *Physiol Behav* 59: 93–97.
  33. Gozal D, Row BW, Gozal E, Kheirandish L, Neville JJ, et al. (2003) Temporal aspects of spatial task performance during intermittent hypoxia in the rat: Evidence for neurogenesis. *Eur J Neurosci* 18: 2335–2342.
  34. Xu W, Chi L, Row BW, Xu R, Ke Y, et al. (2004) Increased oxidative stress is associated with chronic intermittent hypoxia-mediated brain cortical neuronal cell apoptosis in a mouse model of sleep apnea. *Neuroscience* 126: 313–323.
  35. Macey PM, Henderson LA, Macey KE, Alger JR, Frysinger RC, et al. (2002) Brain morphology associated with obstructive sleep apnea. *Am J Respir Crit Care Med* 166: 1382–1387.
  36. Morrell MJ, McRobbie DW, Quest RA, Cummin AR, Ghiassi R, et al. (2003) Changes in brain morphology associated with obstructive sleep apnea. *Sleep Med* 4: 451–454.
  37. Macey PM, Woo MA, Macey KE, Keens TG, Saeed MM, et al. (2004) Hypoxia reveals posterior thalamic, cerebellar, midbrain, and limbic deficits in congenital central hypoventilation syndrome. *J Appl Physiol* 98: 958–969.
  38. Bartlett DJ, Rae C, Thompson CH, Byth K, Joffe DA, et al. (2004) Hippocampal area metabolites relate to severity and cognitive function in obstructive sleep apnea. *Sleep Med* 5: 593–596.
  39. Punjabi NM, Polotsky VY (2005) Disorders of glucose metabolism in sleep apnea. *J Appl Physiol* 99: 1998–2007.
  40. Shepard JW Jr (1992) Hypertension, cardiac arrhythmias, myocardial infarction, and stroke in relation to obstructive sleep apnea. *Clin Chest Med* 13: 437–458.
  41. Costa MO, Lacerda MT, Garcia Otaduy MC, Cerri GC, Da Costa LC (2002) Proton magnetic resonance spectroscopy: Normal findings in the cerebellar hemisphere in childhood. *Pediatr Radiol* 32: 787–792.
  42. Scarabino T, Popolizio T, Bertolino A, Salvolini U (1999) Proton magnetic resonance spectroscopy of the brain in pediatric patients. *Eur J Radiol* 30: 142–153.
  43. Horska A, Kaufmann WE, Brant LJ, Naidu S, Harris JC, et al. (2002) In vivo quantitative proton MRSI study of brain development from childhood to adolescence. *J Magn Reson Imaging* 15: 137–143.
  44. (1992) EEG arousals: Scoring rules and examples: A preliminary report from the Sleep Disorders Atlas Task Force of the American Sleep Disorders Association. *Sleep* 15: 173–184.
  45. Marcus CL, Omlin KJ, Basinski DJ, Bailey SL, Rachal AB, et al. (1992) Normal polysomnographic values for children and adolescents. *Am Rev Respir Dis* 146: 1235–1239.
  46. Traeger N, Schultz B, Pollock AN, Mason T, Marcus CL, et al. (2005) Polysomnographic values in children 2–9 years old: Additional data and review of the literature. *Pediatr Pulmonol* 40: 22–30.
  47. Uliel S, Tauman R, Greenfeld M, Sivan Y (2004) Normal polysomnographic respiratory values in children and adolescents. *Chest* 125: 872–878.
  48. Ferini-Strambi L, Baietto C, Di Gioia MR, Castaldi P, Castronovo C, et al. (2003) Cognitive dysfunction in patients with obstructive sleep apnea (OSA): Partial reversibility after continuous positive airway pressure (CPAP). *Brain Res Bull* 61: 87–92.
  49. Wechsler D (1991) WISC-III: Wechsler intelligence scale for children: Manual, 3rd ed. San Antonio: Psychological Corp. 294 p.
  50. Weiss LG, Saklofske DH, Prifitera A, Holdnack JA (2006) WISC-IV: Advanced clinical interpretation. Burlington (Massachusetts): Academic Press. 448 p.
  51. Monsein LH, Mathews VP, Barker PB, Pardo CA, Blackband SJ, et al. (1993) Irreversible regional cerebral ischemia: Serial MR imaging and proton MR spectroscopy in a nonhuman primate model. *AJNR Am J Neuroradiol* 14: 963–970.
  52. Kamba M, Inoue Y, Higami S, Suto Y, Ogawa T, et al. (2001) Cerebral metabolic impairment in patients with obstructive sleep apnoea: An independent association of obstructive sleep apnoea with white matter change. *J Neurol Neurosurg Psychiatry* 71: 334–339.
  53. Olejnik S, Algina J (2003) Generalized eta and omega squared statistics: Measures of effect size for some common research designs. *Psychol Methods* 8: 434–447.
  54. Cohen J (1988) *Statistical power analysis for the behavioral sciences*, 2nd ed. New York: Academic Press. 567 p.
  55. Rhodes SK, Shimoda KC, Waid LR, O'Neil PM, Oexmann MJ, et al. (1995) Neurocognitive deficits in morbidly obese children with obstructive sleep apnea. *J Pediatr* 127: 741–744.
  56. Naegele B, Thouvard V, Pepin JL, Levy P, Bonnet C, et al. (1995) Deficits of cognitive executive functions in patients with sleep apnea syndrome. *Sleep* 18: 43–52.
  57. Naegele B, Pepin JL, Levy P, Bonnet C, Pellat J, et al. (1998) Cognitive executive dysfunction in patients with obstructive sleep apnea syndrome (OSAS) after CPAP treatment. *Sleep* 21: 392–397.
  58. Davie CA, Hawkins CP, Barker GJ, Brennan A, Tofts PS, et al. (1993) Detection of myelin breakdown products by proton magnetic resonance spectroscopy. *Lancet* 341: 630–631.
  59. Barker PB (2001) N-acetyl aspartate—A neuronal marker? *Ann Neurol* 49: 423–424.
  60. Larsson HB, Christiansen P, Jensen M, Frederiksen J, Heltberg A, et al. (1991) Localized in vivo proton spectroscopy in the brain of patients with multiple sclerosis. *Magn Reson Med* 22: 23–31.
  61. Meyerhoff DJ, MacKay S, Constans JM, Norman D, Van Dyke C, et al. (1994) Axonal injury and membrane alterations in Alzheimer's disease suggested by in vivo proton magnetic resonance spectroscopic imaging. *Ann Neurol* 36: 40–47.
  62. Bizzi A, Ulug AM, Crawford TO, Passe T, Bugiani M, et al. (2001) Quantitative proton MR spectroscopic imaging in acute disseminated encephalomyelitis. *AJNR Am J Neuroradiol* 22: 1125–1130.
  63. Davie CA, Hawkins CP, Barker GJ, Brennan A, Tofts PS, et al. (1994) Serial proton magnetic resonance spectroscopy in acute multiple sclerosis lesions. *Brain* 117: 49–58.
  64. Johnston MV (2004) Clinical disorders of brain plasticity. *Brain Dev* 26: 73–80.
  65. Johnston MV (2003) Injury and plasticity in the developing brain. *Exp Neurol* 184: S37–S41.
  66. Durston S (2003) A review of the biological bases of ADHD: What have we learned from imaging studies? *Ment Retard Dev Disabil Res Rev* 9: 184–195.
  67. van der Knaap MS, van der GJ, van Rijen PC, Faber JA, Valk J, et al. (1990)



- Age-dependent changes in localized proton and phosphorus MR spectroscopy of the brain. *Radiology* 176: 509–515.
68. Pouwels PJ, Brockmann K, Kruse B, Wilken B, Wick M, et al. (1999) Regional age dependence of human brain metabolites from infancy to adulthood as detected by quantitative localized proton MRS. *Pediatr Res* 46: 474–485.
  69. Kheirandish L, Gozal D, Pequignot JM, Pequignot J, Row BW (2005) Intermittent hypoxia during development induces long-term alterations in spatial working memory, monoamines, and dendritic branching in rat frontal cortex. *Pediatr Res* 58: 594–599.
  70. Montgomery-Downs HE, Crabtree VM, Gozal D (2005) Cognition, sleep and respiration in at-risk children treated for obstructive sleep apnoea. *Eur Respir J* 25: 336–342.
  71. Kennedy JD, Blunden S, Hirte C, Parsons DW, Martin AJ, et al. (2004) Reduced neurocognition in children who snore. *Pediatr Pulmonol* 37: 330–337.
  72. Blunden S, Lushington K, Kennedy D, Martin J, Dawson D (2000) Behavior and neurocognitive performance in children aged 5–10 years who snore compared to controls. *J Clin Exp Neuropsychol* 22: 554–568.
  73. Friedman BC, Hendeles-Amitai A, Kozminsky E, Leiberman A, Friger M, et al. (2003) Adenotonsillectomy improves neurocognitive function in children with obstructive sleep apnea syndrome. *Sleep* 26: 999–1005.
  74. Beebe DW, Wells CT, Jeffries J, Chini B, Kalra M, et al. (2004) Neuropsychological effects of pediatric obstructive sleep apnea. *J Int Neuropsychol Soc* 10: 962–975.
  75. Adams N, Strauss M, Schluchter M, Redline S (2001) Relation of measures of sleep-disordered breathing to neuropsychological functioning. *Am J Respir Crit Care Med* 163: 1626–1631.
  76. Kaemingk KL, Pasvogel AE, Goodwin JL, Mulvaney SA, Martinez F, et al. (2003) Learning in children and sleep disordered breathing: Findings of the Tucson Children's Assessment of Sleep Apnea (tuCASA) prospective cohort study. *J Int Neuropsychol Soc* 9: 1016–1026.
  77. Gottlieb DJ, Yao Q, Redline S, Ali T, Mahowald MW (2000) Does snoring predict sleepiness independently of apnea and hypopnea frequency? *Am J Respir Crit Care Med* 162: 1512–1517.
  78. Redline S, Tishler PV, Schluchter M, Aylor J, Clark K, et al. (1999) Risk factors for sleep-disordered breathing in children. Associations with obesity, race, and respiratory problems. *Am J Respir Crit Care Med* 159: 1527–1532.
  79. Hart CN, Palermo TM, Rosen CL (2005) Health-related quality of life among children presenting to a pediatric sleep disorders clinic. *Behav Sleep Med* 3: 4–17.
  80. Friedlander SL, Larkin EK, Rosen CL, Palermo TM, Redline S (2003) Decreased quality of life associated with obesity in school-aged children. *Arch Pediatr Adolesc Med* 157: 1206–1211.
  81. O'Brien LM, Gozal D (2004) Sleep in children with attention deficit/hyperactivity disorder. *Minerva Pediatr* 56: 585–601.
  82. Royall DR, Lauterbach EC, Cummings JL, Reeve A, Rummans TA, et al. (2002) Executive control function: A review of its promise and challenges for clinical research. A report from the Committee on Research of the American Neuropsychiatric Association. *J Neuropsychiatry Clin Neurosci* 14: 377–405.
  83. Mahone EM, Hagelthorn KM, Cutting LE, Schuerholz LJ, Pelletier SF, et al. (2002) Effects of IQ on executive function measures in children with ADHD. *Neuropsychol Dev Cogn C Child Neuropsychol* 8: 52–65.
  84. Ali NJ, Pitson DJ, Stradling JR (1993) Snoring, sleep disturbance, and behaviour in 4–5 year olds. *Arch Dis Child* 68: 360–366.
  85. Blunden S, Lushington K, Kennedy D (2001) Cognitive and behavioural performance in children with sleep-related obstructive breathing disorders. *Sleep Med Rev* 5: 447–461.

## Editors' Summary

**Background.** Sleep is essential for health, and in children it is crucial to normal development. Symptomatic childhood sleep-disordered breathing (SDB) is the name for a range of conditions in which children have difficulties with breathing when they are asleep. The conditions range from simple snoring to the most severe condition, known as obstructive sleep apnea (OSA). Apnea means a temporary absence of breathing, and in OSA this is caused by a temporary but repeated blockage of the flow of air to the lungs. In children, OSA occurs for a number of reasons including enlarged tonsils, long-term allergy, and obesity. About two in every hundred children have OSA. The symptoms of OSA are loud snoring at night, disrupted, restless sleep, undue tiredness, and difficulties in concentration. The main test for it is a sleep study (polysomnography). If untreated, researchers believe that it may lead to a number of long-term problems with health and learning; children with disorders of sleep have been shown to have memory problems, lower general intelligence, and worse executive function (the ability to adapt to new situations), and may have behavioral problems similar to those of attention deficit hyperactivity disorder (ADHD).

**Why Was This Study Done?** Adults with sleep apnea have been shown to have abnormalities of parts of their brain, specifically the frontal cortex, cerebellum, and hippocampus, but so far there are no data on whether there are similar changes in children. Children with sleep apnea may have cognitive deficits, but the research on this topic is limited.

**What Did the Researchers Do and Find?** The researchers wanted to investigate the brains of children with OSA to see if there was any evidence of changes in the brain and if these changes were associated with any learning problems. They studied 31 children (19 with OSA and 12 healthy controls, aged 6–16 y). Participants underwent polysomnography and neuropsychological assessments, such as IQ tests and tests of their ability to perform tasks involving decision making. Some of the children also had specialized scans of their brains (known as proton magnetic resonance spectroscopic imaging) that can measure the levels of certain metabolites—substances that are produced as a result of brain activity. The researchers then compared the neuropsychological test scores with the levels of the metabolites. They found that relative to controls, children with severe OSA had lower IQ and ability to perform tasks involving decision making. Children with OSA also had changes in metabolites in the brain similar to those seen in diseases in which there is damage to brain cells.

**What Do These Findings Mean?** It seems clear that OSA in children is associated with learning problems, and that these learning problems may in turn be associated with changes in brain metabolites. The changes in metabolites are not necessarily permanent—in other diseases where changes have been found they can be reversed with treatment. If these results are confirmed in other children with OSA, it will highlight the importance of treating children for OSA as soon as possible. In addition, the measurement of metabolites may be a way of measuring how well children are responding to treatment.

**Additional Information.** Please access these Web sites via the online version of this summary at <http://dx.doi.org/10.1371/journal.pmed.0030301>.

- MedlinePlus's encyclopedia has an entry on sleep apnea
- The American Sleep Apnea Association has information about having a child investigated for sleep apnea
- The National Sleep Foundation also provides information about sleep disorders